



**OFFICIAL NCAA BASKETBALL BOX SCORE**  
Presentation Toppers vs Shelby County Lady Rockets

03/24/2000 1:00 pm  
Final Box Score

Arena Girls' Sweet 16, McBrayer Arena  
City, State Richmond, Ky

No.	Presentation Toppers	Total FG		3-point		FT	FTA	Rebounds			F	TP	A	TO	BLK	STL	MIN
		FG	FGA	FG	FGA			Off	Def	Tot							
4	April Young	1	1	1	1	0	0	0	0	0	1	3	0	0	0	0	0:16
10	* Anne Hutchens	2	7	1	4	0	0	0	0	0	5	5	0	2	0	2	21:13
12	Blaire Nall	0	4	0	0	2	2	1	2	3	2	2	1	2	0	1	17:05
14	Susanne Firestone	0	0	0	0	0	0	0	0	0	0	0	0	0	0	0	0:12
20	* Julia Reed	2	3	0	0	3	7	1	0	1	4	7	1	0	0	2	22:33
22	* Sarah Nash	4	5	0	0	2	3	3	1	4	2	10	0	3	0	4	18:16
24	Dominique Derrick	3	7	0	2	3	4	1	0	1	4	9	1	1	0	0	19:30
30	Megan Maquire	0	0	0	0	0	0	0	0	0	0	0	0	0	0	0	DNP
32	Amy Mueller	0	0	0	0	0	0	0	0	0	0	0	0	0	0	0	0:16
34	* Morgan Darby	2	7	1	6	2	2	1	2	3	3	7	1	6	0	0	21:05
40	* Joleen Phillips	2	9	0	2	2	2	2	3	5	4	6	2	1	0	1	24:00
44	Amy Lynch	2	4	0	1	1	2	2	1	3	1	5	0	2	0	1	15:02
50	Jessica Votaw	0	0	0	0	0	0	0	0	0	0	0	0	0	0	0	0:16
52	Stephanie Johnson	0	0	0	0	0	0	0	0	0	0	0	0	0	0	0	DNP
54	Celia Hall	0	0	0	0	0	0	0	0	0	0	0	0	0	0	0	0:16
Team (Included in Totals)								2	0	2							
Totals		18	47	3	16	15	22	13	9	22	26	54	6	17	0	11	160
Total FG%: 1st half 6 - 21 (28.6%) 2nd half 12 - 26 (46.2%) Game 18 - 47 (38.3%)												Deadball rebounds					
3Pt FG%: 1st half 0 - 7 (0.00%) 2nd half 3 - 9 (33.3%) Game 3 - 16 (18.8%)												5					
FT%: 1st half 7 - 10 (70.0%) 2nd half 8 - 12 (66.7%) Game 15 - 22 (68.2%)																	

No.	Shelby County Lady Rockets	Total FG		3-point		FT	FTA	Rebounds			F	TP	A	TO	BLK	STL	MIN
		FG	FGA	FG	FGA			Off	Def	Tot							
10	* Samantha Newton	6	13	1	3	0	0	2	2	4	0	13	5	3	0	3	30:26
11	* Tanesha Johnson	0	2	0	0	19	22	0	2	2	3	19	3	5	0	1	30:23
12	Lindsey Haydon	0	0	0	0	0	0	0	0	0	0	0	0	0	0	0	0:21
14	Kim Barnett	0	0	0	0	1	2	0	0	0	0	1	0	0	0	0	0:16
15	Megan Hobson	0	0	0	0	0	0	0	0	0	0	0	0	0	0	0	0:16
20	Davida Evans	0	0	0	0	0	0	0	1	1	0	0	0	0	0	0	0:16
21	Emily Anglin	0	0	0	0	0	0	0	0	0	0	0	0	0	0	0	1:00
23	Ashley Goodlett	0	0	0	0	0	0	0	0	0	0	0	0	0	0	0	0:16
24	Toni Slaughter	0	0	0	0	0	0	1	0	1	0	0	0	1	0	0	3:13
31	* Dana Crittendon	7	8	0	0	4	5	2	4	6	4	18	3	4	0	1	29:49
33	* Brittany Morrison	0	1	0	1	0	0	1	2	3	5	0	0	1	0	1	21:47
34	Anna Watts	0	0	0	0	0	0	0	0	0	0	0	0	0	0	1	0:37
35	Charlotte Marshall	2	2	0	0	0	0	0	0	0	1	4	0	2	0	1	2:53
42	Carrie Kerchner	0	0	0	0	0	0	0	1	1	2	0	0	1	0	0	9:56
44	* LeNita White	4	6	0	0	3	8	1	5	6	3	11	0	0	2	0	28:31
Team (Included in Totals)								0	1	1							
Totals		19	32	1	4	27	37	7	18	25	18	66	11	17	2	8	160
Total FG%: 1st half 9 - 19 (47.4%) 2nd half 10 - 13 (76.9%) Game 19 - 32 (59.4%)												Deadball rebounds					
3Pt FG%: 1st half 1 - 4 (25.0%) 2nd half 0 - 0 (0.00%) Game 1 - 4 (25.0%)												7					
FT%: 1st half 6 - 9 (66.7%) 2nd half 21 - 28 (75.0%) Game 27 - 37 (73.0%)																	

Technical Fouls: None

Attendance: Unknown

Officials: Laura Morris, Ken Wilson, Danny Percell

Score by Period	1st H	2nd H	OT	OT	Final	Record	Overall Conf
Shelby County Lady Rockets	25	41	0	0	66	Lady Rockets	29-5
Presentation Toppers	19	35	0	0	54	Toppers	27-4

Lady Rockets Toppers		Lady Rockets Toppers		Lady Rockets Toppers	
Points off Turnovers	26	15	Second Effort Points	8	5
Points in the Paint	22	12	3 Point Points	3	9
Largest Lead	65	50 (15 pts)	Lead Changes	1	1
			Bench Points	5	19
			Free Throw Points	27	15
			Number of Ties	1	

**University of Kentucky Basketball - Play by Play Report - Period 1 (pg 1)**  
**Shelby County Lady Rockets vs. Presentation Toppers**  
 Date: 03/24/2000 Time: 1:00 pm Site: Girls' Sweet 16, McBrayer Arena-Richmond, Ky Attendance:

##	Name	Action	Score	Clock	Diff	##	Name	Action	Action
10	S Newton	Start Game				10	A Hutchens	Start Game	
11	T Johnson	Start Game				20	J Reed	Start Game	
31	D Crittendon	Start Game				22	S Nash	Start Game	
33	B Morrison	Start Game				34	M Darby	Start Game	
44	L White	Start Game				40	J Phillips	Start Game	
44	L White	Jump Ball Win		1 7:58		22	S Nash	Jump Ball Loss	
10	S Newton	FG Attempt		1 7:42		34	M Darby	Def Rebound	
31	D Crittendon	Personal Foul		1 7:01					
			0-2	1 6:47	-2	22	S Nash	FG Made	34 M Darby Assist
11	T Johnson	Turn Over		1 6:34					
44	L White	Personal Foul		1 6:17					
				1 6:17		20	J Reed	FT Attempt	Toppers Deadball Reb
			0-3	1 6:17	-3	20	J Reed	FT Made	
31	D Crittendon	Turn Over		1 6:08					
				1 6:07		22	S Nash	Steal	
				1 6:02		34	M Darby	Turn Over	(Bad Pass)
10	S Newton	3Pt Attempt		1 5:38					
31	D Crittendon	Putback Made	2-3	1 5:36	-1				
33	B Morrison	Personal Foul		1 4:57	-2	22	S Nash	FT Made	
			2-4	1 4:57	-3	22	S Nash	FT Made	
31	D Crittendon	FG Made	4-5	1 4:42	-1				
		11 T Johnson Assist	4-7	1 4:06	-3	40	J Phillips	FG Made	
				1 4:00		40	J Phillips	Personal Foul	
44	L White	FG Made	6-7	1 3:56	-1				
		10 S Newton Assist		1 3:50		10	A Hutchens	Turn Over	(Bad Pass)
11	T Johnson	FT Made	7-7	1 3:36	(T1)	22	S Nash	Personal Foul	
11	T Johnson	FT Made	8-7	1 3:36	+1 (L1)				
				1 3:24		22	S Nash	Turn Over	(Bad Pass)
31	D Crittendon	Steal		1 3:21					
11	T Johnson	FG Attempt		1 3:07		40	J Phillips	Def Rebound	
31	D Crittendon	Def Rebound		1 2:57		34	M Darby	3Pt Attempt	
				1 2:51		22	S Nash	Personal Foul	
				1 2:51		12	B Nall	Enter Game	for 22 S Nash
				1 2:51					
31	D Crittendon	Turn Over	(Bad Pass)	1 2:38					
				1 2:35		20	J Reed	Steal	
				1 2:24		34	M Darby	3Pt Attempt	Toppers Off Reb
				1 2:22		34	M Darby	Turn Over	(Bad Pass)
10	S Newton	Steal		1 2:22					
10	S Newton	Turn Over	(Bad Pass)	1 2:21					
				1 1:44		24	D Derrick	Enter Game	for 34 M Darby
				1 1:23		12	B Nall	Turn Over	
10	S Newton	Steal		1 1:22					
11	T Johnson	FT Made	9-7	1 1:09	+2	10	A Hutchens	Personal Foul	
11	T Johnson	FT Made	10-7	1 1:09	+3				
				1 0:50		12	B Nall	Turn Over	
10	S Newton	Steal		1 0:49					
33	B Morrison	3Pt Attempt		1 0:33					
44	L White	FG Attempt	10 S Newton Off Reb	1 0:24					
			44 L White Off Reb	1 0:23		24	D Derrick	Personal Foul	
				1 0:23		44	A Lynch	Enter Game	for 20 J Reed
44	L White	FT Attempt	Lady Rockets Deadball Reb	1 0:23					
44	L White	FT Attempt	31 D Crittendon Off Reb	1 0:23					
31	D Crittendon	Putback Made	12-7	1 0:20	+5				
			12-9	1 0:06	+3	10	A Hutchens	FG Made	24 D Derrick Assist

**End of Period Summary Lady Rockets 12 Toppers 9**

**Largest Lead: Lady Rockets 12 Toppers 7 (5 pts)**  
**Lead in Period: Lady Rockets 12 Toppers 7 (5 pts)**  
 4 for 1 oppo pts  
 4 for 4 pts  
 4/9 for 44.4 %  
 4/6 for 66.7 %

**Turnovers**  
**2nd Chances**  
**Field Goals**  
**Free Throws**

**Lead Changes: 1 Ties: 1**  
**Lead Changes: 1 Ties: 1 (this period)**  
 6 for 8 oppo pts  
 1 for 0 pts  
 3/5 for 60.0 %  
 3/4 for 75.0 %

**University of Kentucky Basketball - Play by Play Report - Period 2 (pg 1)**  
**Shelby County Lady Rockets vs. Presentation Toppers**  
**Date: 03/24/2000 Time: 1:00 pm Site: Girls' Sweet 16, McBrayer Arena-Richmond, Ky Attendance:**

##	Name	Action	Action	Score	Clock	Diff	##	Name	Action	Action
24	T Slaughter	Enter Game	for 44 L White	12-11	2 8:00		24	D Derrick	FG Made	
10	S Newton	3Pt Made	11 T Johnson Assist	15-11	2 7:50 +1		24	D Derrick	Personal Foul	
					2 7:30 +4		24	D Derrick	Turn Over	
10	S Newton	Layup Att	24 T Slaughter Off Reb	17-11	2 7:13	+6	12	B Nail	FG Attempt	
31	D Crittendon	FG Made	10 S Newton Assist		2 7:08		10	A Hutchens	Steal	
33	B Morrison	Def Rebound			2 7:00 +6		40	J Phillips	FG Attempt	
10	S Newton	3Pt Attempt	33 B Morrison Off Reb		2 6:41		40	J Phillips	Personal Foul	
31	D Crittendon	Turn Over			2 6:19		40	J Phillips	20 Sec Time Out	
33	B Morrison	Def Rebound	Lady Rockets Deadball Reb		2 6:10		12	B Nail	Def Rebound	(Bad Pass)
10	S Newton	FG Attempt			2 6:03		10	A Hutchens	Turn Over	
44	L White	Enter Game	for 24 T Slaughter		2 6:03		40	J Phillips	Def Rebound	
31	D Crittendon	FT Attempt			2 5:55		40	J Phillips	FG Made	
44	L White	FG Attempt			2 5:55		44	A Lynch	FG Made	
					2 5:55		34	M Darby	Enter Game	40 J Phillips Assist
11	T Johnson	FT Made			2 5:55		22	S Nash	Enter Game	for 12 B Nail
11	T Johnson	FT Made			2 5:42		10	A Hutchens	Personal Foul	for 40 J Phillips
10	S Newton	Def Rebound			2 5:24		10	A Hutchens	FG Attempt	
10	S Newton	FG Made			2 5:14 +4		24	D Derrick	3Pt Attempt	44 A Lynch Off Reb
					2 5:01		10	A Hutchens	FG Attempt	34 M Darby Off Reb
11	T Johnson	FT Made			2 5:01		24	D Derrick	FG Attempt	Toppers Deadball Reb
11	T Johnson	FT Made			18-13	+5	10	A Hutchens	3Pt Attempt	
10	S Newton	Def Rebound			19-13	+6	10	A Hutchens	FG Attempt	
10	S Newton	FG Made			2 4:55		24	D Derrick	3Pt Attempt	44 A Lynch Off Reb
					2 4:36		10	A Hutchens	FG Attempt	34 M Darby Off Reb
44	L White	Block			21-13	+8	24	D Derrick	FG Attempt	Toppers Deadball Reb
					2 4:19		10	A Hutchens	3Pt Attempt	
33	B Morrison	Personal Foul			2 4:02		10	A Hutchens	Def Rebound	
42	C Kerchner	Enter Game	for 33 B Morrison		2 3:49		24	D Derrick	3Pt Attempt	44 A Lynch Off Reb
35	C Marshall	Enter Game	for 10 S Newton		2 3:28		10	A Hutchens	FG Attempt	34 M Darby Off Reb
35	C Marshall	Steal			2 3:27		24	D Derrick	FG Attempt	Toppers Deadball Reb
35	C Marshall	Layup Made			2 3:27		40	J Phillips	Enter Game	for 10 A Hutchens
Lady Rockets	Def Rebound				2 3:27		40	J Phillips	Enter Game	for 10 A Hutchens
11	T Johnson	FG Attempt			2 3:27		22	S Nash	Turn Over	(Bad Pass)
11	T Johnson	Personal Foul			2 3:24		22	S Nash	Turn Over	(Bad Pass)
10	S Newton	Enter Game	for 35 C Marshall		2 3:22		34	M Darby	3Pt Attempt	
					2 3:20 +10		22	S Nash	Def Rebound	
42	C Kerchner	Turn Over			2 2:59		22	S Nash	Def Rebound	
35	C Marshall	Enter Game	for 42 C Kerchner		2 2:37		24	D Derrick	FT Made	
31	D Crittendon	Def Rebound			2 2:30		24	D Derrick	FT Made	
35	C Marshall	Layup Made	31 D Crittendon Assist		2 2:30 +9		24	D Derrick	FT Made	
11	T Johnson	Personal Foul			23-14	+9	24	D Derrick	FT Made	
21	E Anglin	Enter Game	for 11 T Johnson		23-15	+8	24	D Derrick	FT Made	
Lady Rockets	Time Out				2 2:26		40	J Phillips	FG Attempt	22 S Nash Off Reb
					2 2:20		34	M Darby	3Pt Attempt	
31	D Crittendon	Def Rebound			2 2:16		40	J Phillips	FG Attempt	40 J Phillips Off Reb
35	C Marshall	Layup Made	31 D Crittendon Assist		2 2:10 +10		40	J Phillips	FG Attempt	40 J Phillips Off Reb
11	T Johnson	Personal Foul			2 1:47		10	A Hutchens	Enter Game	for 44 A Lynch
21	E Anglin	Enter Game	for 11 T Johnson		2 1:46		10	A Hutchens	3Pt Attempt	40 J Phillips Off Reb
Lady Rockets	Time Out				2 1:46		40	J Phillips	Putback Att	24 D Derrick Off Reb
					2 1:38		40	J Phillips	Putback Att	24 D Derrick Off Reb
31	D Crittendon	Personal Foul			2 1:36		24	D Derrick	FT Made	
42	C Kerchner	Enter Game	for 31 D Crittendon		2 1:34		24	D Derrick	FT Attempt	
44	L White	Def Rebound			25-16	+9	24	D Derrick	FT Made	
35	C Marshall	Turn Over	(Bad Pass)		2 1:34		24	D Derrick	FT Attempt	
					2 1:26		22	S Nash	Steal	
35	C Marshall	Turn Over	(Bad Pass)		2 1:24		20	J Reed	Enter Game	for 24 D Derrick
					2 1:21		20	J Reed	20 Sec Time Out	
					2 1:21		20	J Reed	FG Made	40 J Phillips Assist
35	C Marshall	Turn Over	(Bad Pass)		25-18	+7	20	J Reed	FG Made	40 J Phillips Assist
					2 1:03		22	S Nash	Steal	
					2 1:01		10	A Hutchens	3Pt Attempt	20 J Reed Off Reb
42	C Kerchner	Personal Foul			2 0:56		10	A Hutchens	3Pt Attempt	20 J Reed Off Reb
21	E Anglin	Leave Game			2 0:51		12	B Nail	Enter Game	for 40 J Phillips
11	T Johnson	Enter Game	for 35 C Marshall		2 0:51		20	J Reed	FT Attempt	Toppers Deadball Reb
33	B Morrison	Enter Game			2 0:51		20	J Reed	FT Made	Toppers Deadball Reb
					25-19	+6	20	J Reed	FT Made	Toppers Deadball Reb
11	T Johnson	Offensive Foul			2 0:05		10	A Hutchens	Charge Taken	
11	T Johnson	Turn Over			2 0:05		10	A Hutchens	Charge Taken	

**University of Kentucky Basketball - Play by Play Report - Period 2 (pg 2)**  
**Shelby County Lady Rockets vs. Presentation Toppers**  
**Date: 03/24/2000 Time: 1:00 pm Site: Girls' Sweet 16, McBrayer Arena-Richmond, Ky Attendance:**

##	Name	Action	Score	Clock	Diff	##	Name	Action	Action
21	E Anglin	Enter Game		0:05		12	B Nall	Leave Game	
		for 11 T Johnson		0:05		24	D Derrick	Enter Game	for 20 J Reed
				0:05		40	J Phillips	Enter Game	

OFFICIAL NCAA BASKETBALL BOX SCORE  
Presentation Toppers vs Shelby County Lady Rockets

03/24/2000 1:00 pm  
1st Half Box Score

Arena Girls' Sweet 16, McBrayer Arena  
City, State Richmond, Ky

No.	Presentation Toppers	Total FG		3-point		FT	FTA	Rebounds			F	TP	A	TO	BLK	STL	MIN
		FG	FGA	FG	FGA			Off	Def	Tot							
4	April Young	0	0	0	0	0	0	0	0	0	0	0	0	0	0	0	DNP
10	* Anne Hutchens	1	5	0	2	0	0	0	0	0	2	2	0	2	0	1	14:19
12	Blaire Nail	0	1	0	0	0	0	0	1	1	0	0	0	2	0	0	6:36
14	Susanne Firestone	0	0	0	0	0	0	0	0	0	0	0	0	0	0	0	DNP
20	* Julia Reed	1	1	0	0	2	4	1	0	1	0	4	0	0	0	1	8:53
22	* Sarah Nash	1	1	0	0	2	2	1	1	2	2	4	0	2	0	3	10:10
24	Dominique Derrick	1	3	0	1	3	4	1	0	1	2	5	1	1	0	0	8:28
30	Megan Maquire	0	0	0	0	0	0	0	0	0	0	0	0	0	0	0	DNP
32	Amy Mueller	0	0	0	0	0	0	0	0	0	0	0	0	0	0	0	DNP
34	* Morgan Darby	0	4	0	4	0	0	1	1	2	0	0	1	2	0	0	11:17
40	* Joleen Phillips	1	5	0	0	0	0	2	2	4	2	2	2	0	0	0	13:40
44	Amy Lynch	1	1	0	0	0	0	1	0	1	0	2	0	0	0	0	6:37
50	Jessica Votaw	0	0	0	0	0	0	0	0	0	0	0	0	0	0	0	DNP
52	Stephanie Johnson	0	0	0	0	0	0	0	0	0	0	0	0	0	0	0	DNP
54	Celia Hall	0	0	0	0	0	0	0	0	0	0	0	0	0	0	0	DNP
Team (Included in Totals)								1	0	1							
Totals		6	21	0	7	7	10	8	5	13	8	19	4	9	0	5	80

Total FG%: 1st half 6 - 21 (28.6%) 2nd half 0 - 0 (0.00%) Game 6 - 21 (28.6%)  
 3Pt FG%: 1st half 0 - 7 (0.00%) 2nd half 0 - 0 (0.00%) Game 0 - 7 (0.00%)  
 FT%: 1st half 7 - 10 (70.0%) 2nd half 0 - 0 (0.00%) Game 7 - 10 (70.0%)

Deadball rebounds 3

No.	Shelby County Lady Rockets	Total FG		3-point		FT	FTA	Rebounds			F	TP	A	TO	BLK	STL	MIN
		FG	FGA	FG	FGA			Off	Def	Tot							
10	* Samantha Newton	2	7	1	3	0	0	1	1	2	0	5	2	1	0	3	15:03
11	* Tanesha Johnson	0	2	0	0	6	6	0	0	0	3	6	2	2	0	0	15:00
12	Lindsey Haydon	0	0	0	0	0	0	0	0	0	0	0	0	0	0	0	DNP
14	Kim Barnett	0	0	0	0	0	0	0	0	0	0	0	0	0	0	0	DNP
15	Megan Hobson	0	0	0	0	0	0	0	0	0	0	0	0	0	0	0	DNP
20	Davida Evans	0	0	0	0	0	0	0	0	0	0	0	0	0	0	0	DNP
21	Emily Anglin	0	0	0	0	0	0	0	0	0	0	0	0	0	0	0	1:00
23	Ashley Goodlett	0	0	0	0	0	0	0	0	0	0	0	0	0	0	0	DNP
24	Toni Slaughter	0	0	0	0	0	0	1	0	1	0	0	0	0	0	0	2:05
31	* Dana Crittendon	4	4	0	0	0	1	2	2	4	2	8	1	3	0	1	14:26
33	* Brittany Morrison	0	1	0	1	0	0	1	2	3	2	0	0	0	0	0	13:24
34	Anna Watts	0	0	0	0	0	0	0	0	0	0	0	0	0	0	0	DNP
35	Charlotte Marshall	2	2	0	0	0	0	0	0	0	0	4	0	2	0	1	2:32
42	Carrie Kerchner	0	0	0	0	0	0	0	0	0	1	0	0	1	0	0	2:35
44	* LeNita White	1	3	0	0	0	2	1	1	2	1	2	0	0	1	0	13:55
Team (Included in Totals)								0	1	1							
Totals		9	19	1	4	6	9	6	7	13	9	25	5	9	1	5	80

Total FG%: 1st half 9 - 19 (47.4%) 2nd half 0 - 0 (0.00%) Game 9 - 19 (47.4%)  
 3Pt FG%: 1st half 1 - 4 (25.0%) 2nd half 0 - 0 (0.00%) Game 1 - 4 (25.0%)  
 FT%: 1st half 6 - 9 (66.7%) 2nd half 0 - 0 (0.00%) Game 6 - 9 (66.7%)

Deadball rebounds 2

Technical Fouls: None

Attendance: Unknown

Officials: Laura Morris, Ken Wilson, Danny Percell

Score by Period	1st H	2nd H	Final	Record	Overall	Conf
Shelby County Lady Rockets	25	0	25	Lady Rockets	28-5	
Presentation Toppers	19	0	19	Toppers	27-3	

	Lady Rockets Toppers		Lady Rockets Toppers		Lady Rockets Toppers			
Points off Turnovers	12	4	Second Effort Points	6	2	Bench Points	4	7
Points in the Paint	14	2	3 Point Points	3	0	Free Throw Points	6	7
Largest Lead	23	13 (10 pts)	Lead Changes	1		Number of Ties	1	

**University of Kentucky Basketball - Play by Play Report - Period 3 (pg 1)**  
**Shelby County Lady Rockets vs. Presentation Toppers**  
**Date: 03/24/2000 Time: 1:00 pm Site: Girls' Sweet 16, McBrayer Arena-Richmond, Ky Attendance:**

##	Name	Action	Action	Score	Clock	Diff	##	Name	Action	Action
					3 8:00		10	A Hutchens	Leave Game	
					3 8:00		22	S Nash	Leave Game	
					3 8:00		24	D Derrick	Leave Game	
					3 8:00		34	M Darby	Leave Game	
					3 8:00		10	A Hutchens	Enter Game	for 40 J Phillips
					3 8:00		20	J Reed	Enter Game	
					3 8:00		22	S Nash	Enter Game	
					3 8:00		34	M Darby	Enter Game	
					3 8:00		40	J Phillips	Enter Game	
10	S Newton	Leave Game			3 8:00					
21	E Anglin	Leave Game			3 8:00					
33	B Morrison	Leave Game			3 8:00					
42	C Kerchner	Leave Game			3 8:00					
10	S Newton	Enter Game	for 44 L White		3 8:00					
11	T Johnson	Enter Game			3 8:00					
31	D Crittendon	Enter Game			3 8:00					
33	B Morrison	Enter Game			3 8:00					
44	L White	Enter Game			3 8:00					
11	T Johnson	Turn Over	(Bad Pass)		3 7:51					
					3 7:48		22	S Nash	Steal	
				25-21	3 7:47	+4	22	S Nash	Layup Made	
33	B Morrison	Turn Over	(Bad Pass)		3 7:18					
					3 7:15		10	A Hutchens	Steal	
44	L White	Def Rebound			3 7:02		40	J Phillips	FG Attempt	
10	S Newton	Layup Made	11 T Johnson Assist	27-21	3 6:57	+6				
33	B Morrison	Personal Foul			3 6:36					
					3 6:36		20	J Reed	FT Attempt	Toppers Deadball Reb
11	T Johnson	Def Rebound			3 6:36		20	J Reed	FT Attempt	
10	S Newton	Turn Over	(Bad Pass)		3 6:20		20	J Reed	Steal	
11	T Johnson	Def Rebound			3 6:11		40	J Phillips	3Pt Attempt	
31	D Crittendon	FG Made		29-21	3 5:50	+8	20	J Reed	Personal Foul	
					3 5:45					
33	B Morrison	Steal			3 5:01		22	S Nash	Turn Over	
					3 5:01					
					3 5:01		40	J Phillips	Personal Foul	
					3 5:01		12	B Nall	Enter Game	for 22 S Nash
					3 5:00		10	A Hutchens	Personal Foul	
44	L White	FG Made	31 D Crittendon Assist	31-21	3 4:48	+10				
					3 4:27		34	M Darby	Turn Over	
11	T Johnson	Steal			3 4:27					
10	S Newton	FG Attempt	10 S Newton Off Reb		3 4:17					
44	L White	FG Made	10 S Newton Assist	33-21	3 4:02	+12				
				33-24	3 3:49	+9	10	A Hutchens	3Pt Made	
					3 3:48			Toppers	Time Out	
					3 3:48		24	D Derrick	Enter Game	for 34 M Darby
					3 3:28		40	J Phillips	Personal Foul	
					3 3:28		44	A Lynch	Enter Game	for 40 J Phillips
44	L White	FT Made		34-24	3 3:28	+10				
44	L White	FT Made		35-24	3 3:28	+11				
				35-26	3 3:13	+9	24	D Derrick	FG Made	
10	S Newton	FG Attempt			3 2:47		44	A Lynch	Def Rebound	
					3 2:45					
				35-28	3 2:27	+7	24	D Derrick	FG Made	
					3 2:17		10	A Hutchens	Personal Foul	
					3 2:17		34	M Darby	Enter Game	for 10 A Hutchens
					3 2:06		20	J Reed	Personal Foul	
11	T Johnson	FT Attempt	Lady Rockets Deadball Reb		3 2:06					
11	T Johnson	FT Made		36-28	3 2:06	+8				
33	B Morrison	Personal Foul			3 1:57					
42	C Kerchner	Enter Game	for 33 B Morrison		3 1:57					
				36-29	3 1:57	+7	12	B Nall	FT Made	
				36-30	3 1:57	+6	12	B Nall	FT Made	
10	S Newton	Turn Over	(Bad Pass)		3 1:38					
					3 1:38		44	A Lynch	Steal	
31	D Crittendon	Personal Foul		36-31	3 1:15	+5	34	M Darby	FT Made	
				36-32	3 1:15	+4	34	M Darby	FT Made	
11	T Johnson	FT Made		37-32	3 1:04	+5	44	A Lynch	Personal Foul	
11	T Johnson	FT Made		38-32	3 1:04	+6				
					3 0:31		34	M Darby	Turn Over	(Traveling)
10	S Newton	FG Made		40-32	3 0:10	+8				
42	C Kerchner	Def Rebound			3 0:00		12	B Nall	FG Attempt	

**End of Period Summary Lady Rockets 40 Toppers 32**

**Largest Lead: Lady Rockets 33 Toppers 21 (12 pts)**  
**Lead in Period: Lady Rockets 33 Toppers 21 (12 pts)**  
**4 for 4 oppo pts**  
**1 for 2 pts**

**Turnovers**  
**2nd Chances**

**Lead Changes: 1 Ties: 1**  
**Lead Changes: 0 Ties: 0 (this period)**  
**3 for 6 oppo pts**  
**0 for 0 pts**

University of Kentucky Basketball - Play by Play Report - Period 3 (pg 2)  
Shelby County Lady Rockets vs. Presentation Toppers  
Date: 03/24/2000 Time: 1:00 pm Site: Girls' Sweet 16, McBrayer Arena-Richmond, Ky Attendance:

## Name	Action	Action	Score	Clock	Diff	## Name	Action	Action
	5/7 for 71.4 %			Field Goals			4/7 for 57.1 %	
	5/6 for 83.3 %			Free Throws			4/6 for 66.7 %	



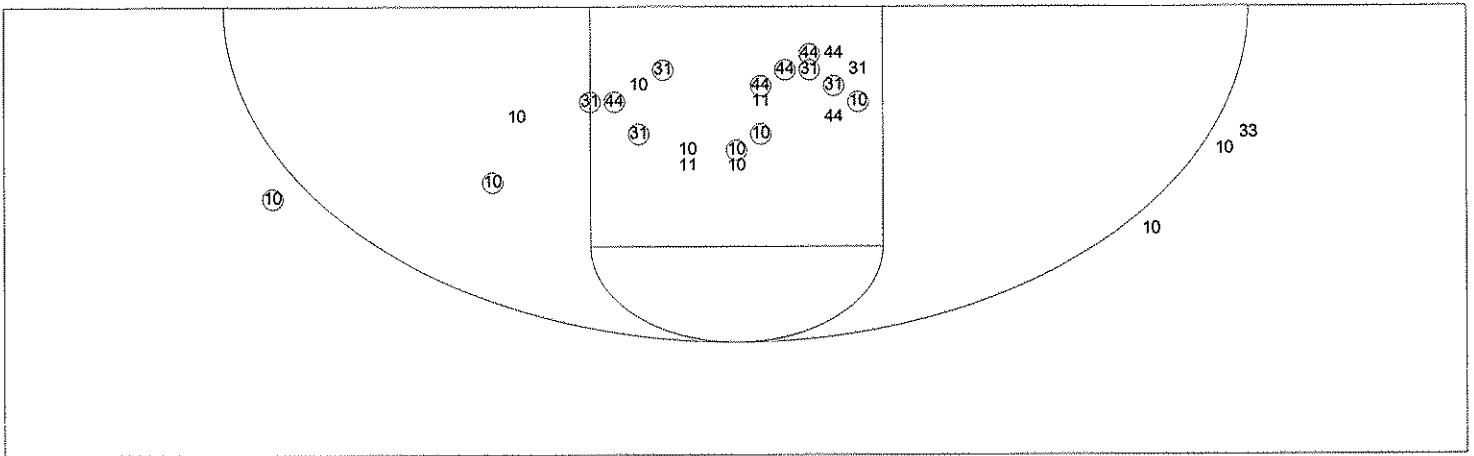
**University of Kentucky Basketball - Play by Play Report - Period 4 (pg 1)**  
**Shelby County Lady Rockets vs. Presentation Toppers**  
**Date: 03/24/2000 Time: 1:00 pm Site: Girls' Sweet 16, McBrayer Arena-Richmond, Ky Attendance:**

##	Name	Action	Action	Score	Clock	Diff	##	Name	Action	Action
24	T Slaughter	Enter Game	for 44 L White		4 8:00		20	J Reed	Personal Foul	
11	T Johnson	FT Made		41-32	4 7:56	+9	34	M Darby	Def Rebound	
11	T Johnson	FT Attempt			4 7:56		44	A Lynch	Turn Over	(Fumble)
10	S Newton	FG Made		43-32	4 7:48	+11				
42	C Kerchner	Personal Foul			4 7:13		12	B Nall	Leave Game	
					4 7:13		20	J Reed	Leave Game	
					4 7:13		10	A Hutchens	Enter Game	for 34 M Darby
					4 7:13		22	S Nash	Enter Game	
					4 7:13		40	J Phillips	Enter Game	
44	L White	Enter Game	for 24 T Slaughter		4 7:13					
44	L White	Def Rebound			4 6:59		24	D Derrick	FG Attempt	
11	T Johnson	Turn Over			4 6:54					
					4 6:50		10	A Hutchens	3Pt Attempt	22 S Nash Off Reb
				43-34	4 6:43	+9	22	S Nash	FG Made	
11	T Johnson	Turn Over			4 6:38					
31	D Crittendon	Personal Foul		43-35	4 6:36	+8	40	J Phillips	FT Made	
				43-36	4 6:36	+7	40	J Phillips	FT Made	
31	D Crittendon	FG Made	10 S Newton Assist	45-36	4 6:20	+9				
					4 6:06		40	J Phillips	Turn Over	(Fumble)
					4 6:02		10	A Hutchens	Personal Foul	
					4 6:02		20	J Reed	Enter Game	for 10 A Hutchens
31	D Crittendon	FT Made		46-36	4 6:02	+10				
31	D Crittendon	FT Made		47-36	4 6:02	+11				
44	L White	Personal Foul			4 5:47					
					4 5:43		44	A Lynch	Turn Over	(Bad Pass)
					4 5:25		12	B Nall	Enter Game	for 22 S Nash
44	L White	FG Made	10 S Newton Assist	49-36	4 5:22	+13				
				49-38	4 5:11	+11	44	A Lynch	FG Made	20 J Reed Assist
33	B Morrison	Enter Game	for 42 C Kerchner		4 5:08					
31	D Crittendon	FG Made		51-38	4 4:53	+13				
44	L White	Def Rebound			4 4:43		44	A Lynch	FG Attempt	
31	D Crittendon	FG Attempt			4 4:36		12	B Nall	Def Rebound	
44	L White	Block			4 4:23		20	J Reed	FG Attempt	12 B Nall Off Reb
31	D Crittendon	Def Rebound			4 4:19		12	B Nall	FG Attempt	
31	D Crittendon	Turn Over			4 4:12					
					4 4:12		12	B Nall	Steal	
				51-40	4 4:06	+11	40	J Phillips	FG Made	
Lady Rockets	Time Out				4 3:56					
					4 3:56		22	S Nash	Enter Game	for 44 A Lynch
					4 3:38		20	J Reed	Personal Foul	
44	L White	FT Attempt	Lady Rockets Deadball Reb		4 3:38					
44	L White	FT Made		52-40	4 3:38	+12				
				52-42	4 3:24	+10	22	S Nash	FG Made	
10	S Newton	FG Made	31 D Crittendon Assist	54-42	4 3:03	+12				
					4 3:00					
				54-44	4 2:48	+10	20	J Reed	FG Made	
					4 2:48					
33	B Morrison	Personal Foul			4 2:48					
42	C Kerchner	Enter Game	for 33 B Morrison		4 2:48		34	M Darby	Enter Game	for 40 J Phillips
				54-45	4 2:48	+9	20	J Reed	FT Made	
					4 2:48					
					4 2:10		34	M Darby	Personal Foul	
					4 2:10		40	J Phillips	Enter Game	for 24 D Derrick
11	T Johnson	FT Made		55-45	4 2:10	+10				
11	T Johnson	FT Made		56-45	4 2:10	+11				
				56-48	4 2:02	+8	34	M Darby	3Pt Made	12 B Nall Assist
					4 2:01					
					4 2:01					
					4 2:01		40	J Phillips	Enter Game	for 40 J Phillips
11	T Johnson	FT Made		57-48	4 2:01	+9	24	D Derrick	Enter Game	for 40 J Phillips
11	T Johnson	FT Made		58-48	4 2:01	+10	12	B Nall	Personal Foul	
					4 1:53					
					4 1:52		12	B Nall	FG Attempt	Toppers Deadball Reb
44	L White	Personal Foul			4 1:52		22	S Nash	FT Attempt	
10	S Newton	Def Rebound			4 1:40		24	D Derrick	Personal Foul	
					4 1:40		40	J Phillips	Enter Game	for 20 J Reed
					4 1:40					
11	T Johnson	FT Attempt	Lady Rockets Deadball Reb		4 1:40					
11	T Johnson	FT Made		59-48	4 1:40	+11				
				59-50	4 1:29	+9	34	M Darby	FG Made	
11	T Johnson	FT Made		60-50	4 1:18	+10	34	M Darby	Personal Foul	
11	T Johnson	FT Made		61-50	4 1:18	+11				
					4 1:15		34	M Darby	Turn Over	(Traveling)
					4 1:15		20	J Reed	Enter Game	for 40 J Phillips
					4 1:05		12	B Nall	Personal Foul	
					4 1:05		12	B Nall	Leave Game	

**University of Kentucky Basketball - Play by Play Report - Period 4 (pg 2)**  
**Shelby County Lady Rockets vs. Presentation Toppers**  
**Date: 03/24/2000 Time: 1:00 pm Site: Girls' Sweet 16, McBrayer Arena-Richmond, Ky Attendance:**

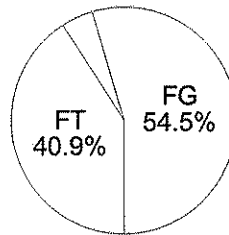
##	Name	Action	Action	Score	Clock	Diff	##	Name	Action	Action
					4 1:05		40	J Phillips	Enter Game	for 20 J Reed
					4 1:05		44	A Lynch	Enter Game	
11	T Johnson	FT Made		62-50	4 1:05	+12				
11	T Johnson	FT Made		63-50	4 1:05	+13				
44	L White	Def Rebound			4 1:01		24	D Derrick	3Pt Attempt	
					4 0:56		24	D Derrick	Personal Foul	
44	L White	FT Attempt	Lady Rockets Deadball Reb		4 0:56		40	J Phillips	Def Rebound	
44	L White	FT Attempt			4 0:50		40	J Phillips	3Pt Attempt	22 S Nash Off Reb
					4 0:44		22	S Nash	FG Attempt	Toppers Off Reb
31	D Crittendon	Def Rebound			4 0:41		34	M Darby	3Pt Attempt	
					4 0:37		34	M Darby	Personal Foul	
10	S Newton	Leave Game			4 0:37					
24	T Slaughter	Enter Game	for 44 L White		4 0:37					
35	C Marshall	Enter Game			4 0:37					
31	D Crittendon	FT Made		64-50	4 0:37	+14				
31	D Crittendon	FT Made		65-50	4 0:37	+15				
					4 0:37		22	S Nash	Leave Game	
					4 0:37		12	B Nall	Enter Game	for 24 D Derrick
					4 0:37		20	J Reed	Enter Game	
11	T Johnson	Leave Game			4 0:37					
12	L Haydon	Enter Game	for 31 D Crittendon		4 0:37					
34	A Watts	Enter Game			4 0:37					
					4 0:29		34	M Darby	Turn Over	
34	A Watts	Steal			4 0:29					
24	T Slaughter	Turn Over			4 0:25					
					4 0:24		40	J Phillips	Steal	
					4 0:17		44	A Lynch	3Pt Attempt	44 A Lynch Off Reb
35	C Marshall	Personal Foul			4 0:16					
12	L Haydon	Leave Game			4 0:16					
24	T Slaughter	Leave Game			4 0:16					
35	C Marshall	Leave Game			4 0:16					
14	K Barnett	Enter Game	for 42 C Kerchner		4 0:16					
15	M Hobson	Enter Game			4 0:16					
20	D Evans	Enter Game			4 0:16					
23	A Goodlett	Enter Game			4 0:16					
					4 0:16		12	B Nall	Leave Game	
					4 0:16		20	J Reed	Leave Game	
					4 0:16		34	M Darby	Leave Game	
					4 0:16		4	A Young	Enter Game	for 40 J Phillips
					4 0:16		32	A Mueller	Enter Game	
					4 0:16		50	J Votaw	Enter Game	
					4 0:16		54	C Hall	Enter Game	
				65-51	4 0:16	+14	44	A Lynch	FT Made	
20	D Evans	Def Rebound			4 0:16		44	A Lynch	FT Attempt	
					4 0:12		14	S Firestone	Enter Game	for 44 A Lynch
				65-54	4 0:09	+11	4	A Young	3Pt Made	
					4 0:01		4	A Young	Personal Foul	
14	K Barnett	FT Attempt	Lady Rockets Deadball Reb		4 0:01					
14	K Barnett	FT Made		66-54	4 0:01	+12				

University of Kentucky Basketball - TEAM SHOT CHART for the Lady Rockets  
 Shelby County Lady Rockets vs. Presentation Toppers  
 DATE: 03/24/2000 TIME: 1:00 pm SITE: Girls' Sweet 16, McBrayer Arena-Richmond, Ky

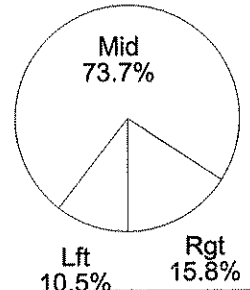


Shot Summary	M/A	%	PTS
3Pt FG	1/4	25.0%	3
2Pt FG	18/28	64.3%	36
Layups - L	0/0	0.0%	0
Layups - R	3/4	75.0%	6
Dunks	0/0	0.0%	0
Putbacks	2/2	100.0%	4
Overall Shooting	19/32	59.4%	39
Free Throws	27/37	73.0%	27
Total Points			66

Scoring Distribution  
3pt 4.5%

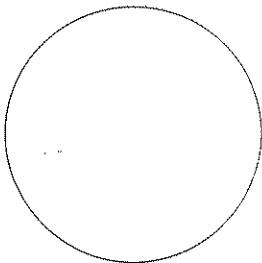


Scoring Locations

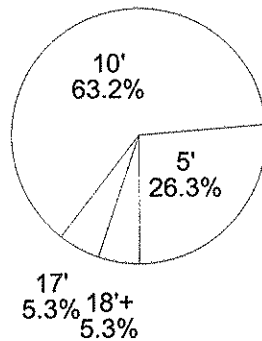


By Period	FG	FGA	FG%	3Pt	3PA	3P%	FT	FTA	FT%	PTS	ORB	DRB	TR	PF	AST	TO	BS	ST	P/S
1st Period	4	9	44.4	0	2	0.00	4	6	66.7	12	4	1	5	3	2	4	0	4	1.00
2nd Period	5	10	50.0	1	2	50.0	2	3	66.7	13	2	6	8	6	3	5	1	1	1.18
3rd Period	5	7	71.4	0	0	0.00	5	6	83.3	15	1	4	5	3	3	4	0	2	1.50
4th Period	5	6	83.3	0	0	0.00	16	22	72.7	26	0	7	7	6	3	4	1	1	1.53
Game	19	32	59.4	1	4	25.0	27	37	73.0	66	7	18	25	18	11	17	2	8	1.32

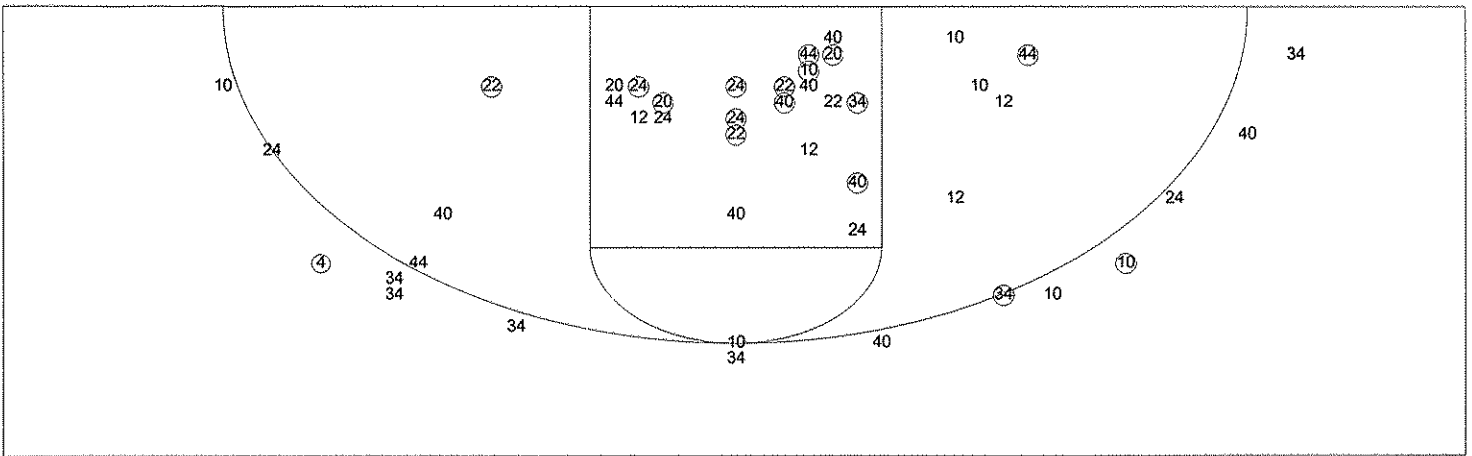
Scoring Breakdown



Scoring Range

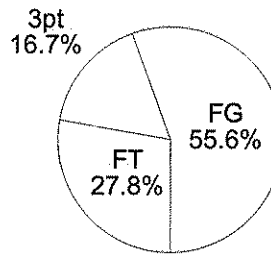


University of Kentucky Basketball - TEAM SHOT CHART for the Toppers  
 Shelby County Lady Rockets vs. Presentation Toppers  
 DATE: 03/24/2000 TIME: 1:00 pm SITE: Girls' Sweet 16, McBrayer Arena-Richmond, Ky

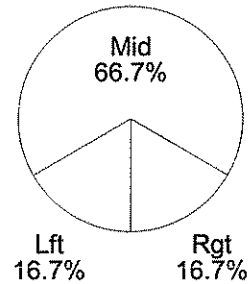


Shot Summary	M/A	%	PTS
3Pt FG	3/16	18.8%	9
2Pt FG	15/31	48.4%	30
Layups - L	1/1	100.0%	2
Layups - R	0/0	0.0%	0
Dunks	0/0	0.0%	0
Putbacks	0/1	0.0%	0
Overall Shooting	18/47	38.3%	39
Free Throws	15/22	68.2%	15
Total Points			54

Scoring Distribution

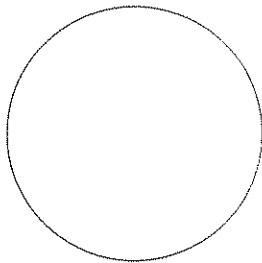


Scoring Locations



By Period	FG	FGA	FG%	3Pt	3PA	3P%	FT	FTA	FT%	PTS	ORB	DRB	TR	PF	AST	TO	BS	ST	P/S
1st Period	3	5	60.0	0	2	0.00	3	4	75.0	9	1	2	3	5	2	6	0	2	1.29
2nd Period	3	16	18.8	0	5	0.00	4	6	66.7	10	7	3	10	3	2	3	0	3	0.53
3rd Period	4	7	57.1	1	2	50.0	4	6	66.7	13	0	1	1	7	0	3	0	4	1.30
4th Period	8	19	42.1	2	7	28.6	4	6	66.7	22	5	3	8	11	2	5	0	2	1.00
Game	18	47	38.3	3	16	18.8	15	22	68.2	54	13	9	22	26	6	17	0	11	0.93

Scoring Breakdown



Scoring Range

